

**paragraph**<sup>®</sup>  
SPACE TO GROW

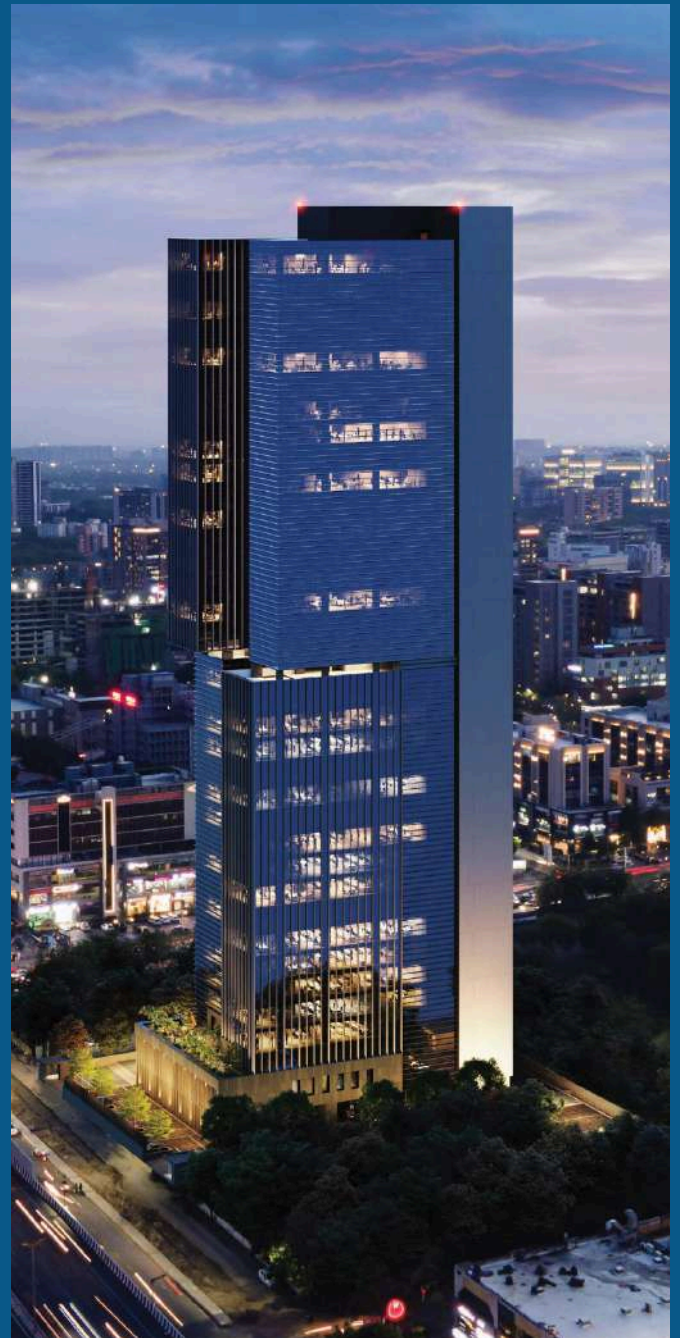
WORKSPACE SOLUTIONS FOR GLOBAL CAPABILITY CENTRES

# Scalable GCC Workspace Solutions.

Plug-and-play, built-to-suit and fully managed offices that help multinationals launch and scale their India Global Capability Centres - without the capital outlay, fit-out delays or operational complexity.



We're expanding and investing in spacious, world-class infrastructure. Our new facilities meet global standards for power, security, and network resilience—built to support multinational clients, large-scale operations, and future growth.



— THE PLATFORM

# A proven platform for global operations.

**400K+**

SQ. FT.  
UNDER MANAGEMENT

**4,000+**

WORKSTATIONS  
LIVE ACROSS CENTRES

**2,000+**

CLIENTS  
SERVED TO DATE

**20+**

GLOBAL  
INDUSTRY AWARDS

Paragraph has built a dynamic ecosystem engineered for **innovation, collaboration and growth**. Our spaces pair premium, enterprise-grade infrastructure with the flexibility and functionality that fast-moving organisations demand.

From start-ups to large enterprises and Global Capability Centres, our commitment to excellence has enabled businesses across industries to scale efficiently - sustaining productivity and creativity inside a consistently world-class work environment.



AGILITY BY DESIGN

# Coworking powers agile GCC growth.

Managed and coworking spaces give Global Capability Centres a **fast, flexible and cost-efficient** path to establish and scale operations. Fully serviced, plug-and-play infrastructure removes the need for heavy capital expenditure and long-term lease commitments - shifting to an operating-expense model that lowers financial risk while preserving the agility to scale teams up and phase-wise as the business demands.



Premium **Grade-A workspaces** - high-speed internet, secure systems and modern amenities - elevate the employee experience and strengthen talent attraction and retention. Beyond infrastructure, these environments spark innovation through proximity to start-ups and enterprises, while built-in **compliance, safety and facility management** simplify operational complexity - keeping GCC leadership focused squarely on core business functions.

# Our Esteemed Clients

---



# Tailored managed offices, built for growth.

Beyond premium environments, Paragraph delivers **fully customised managed offices** tailored to each organisation's unique requirements - thoughtfully designed, built and operated to reflect your brand identity while ensuring seamless functionality. From bespoke interiors to end-to-end operational management, every detail is handled to create a workspace that aligns with how your business actually works.

## One partner. Everything handled.

- Strategic location selection
- Customised, brand-led fit-outs
- IT & security standard compliance
- Tailored branding throughout
- Flexible, team-led layouts
- End-to-end facility management



# Why GCCs choose managed spaces.

## 01 Speed & Flexibility

Ready-to-use, plug-and-play environments mean teams are operational in weeks, not quarters — with terms that flex as the mandate evolves.

## 02 Scalability

Scale headcount and footprint seamlessly — from a handful of desks to large, private, fully serviced customised floors, on demand.

## 03 Cost Efficiency

Reduce upfront capital investment and convert fit-out and operations into a predictable operating expense — a leaner, lower-risk model.

## 04 Premium Amenities

Modern, collaborative environments with high-speed connectivity, secure infrastructure, and wellness-focused spaces that enhance employee productivity.



— BUILT TO SUIT

# Trusted by global leaders.

Paragraph designs, builds and operates offices for some of the world's most demanding organisations - spaces engineered to reflect each brand and evolve with its growth.

e.l.f.  
BEAUTY

Jacobs

Kraft *Heinz*

Roche

armanino 

RESULTS

# Proven GCC growth.

This approach is already proven with leading global organisations. Paragraph partners with GCCs including Kraft Heinz, e.l.f. Beauty, Armanino and Roche, delivering customised solutions that evolve alongside their growth - meeting unique requirements while enabling rapid, scalable expansion through thoughtfully designed and managed workspaces.

**KraftHeinz**

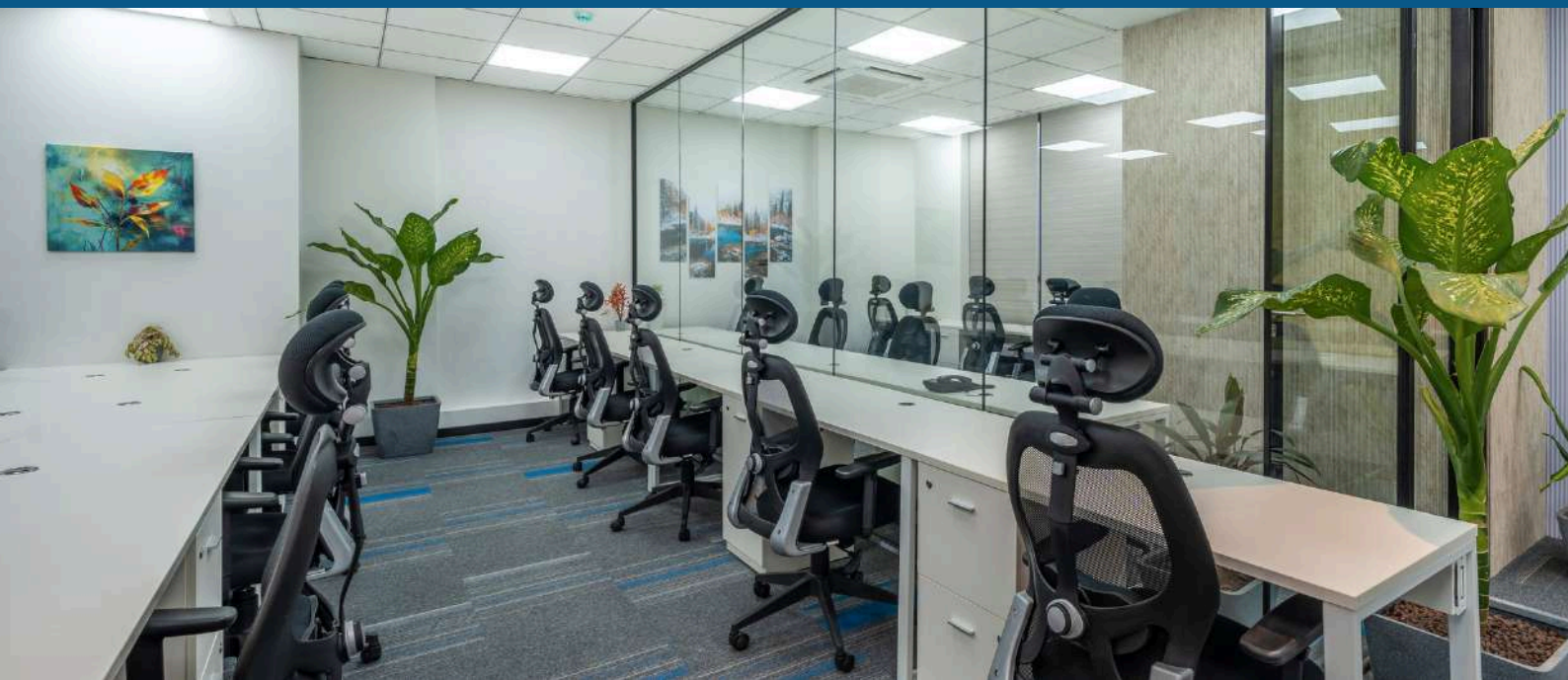
15 → **1,000+**

SEATS, AND SCALING

**e.l.f.**  
BEAUTY

40 → **120+**

SEATS IN YEAR ONE



— LOCATION ADVANTAGE

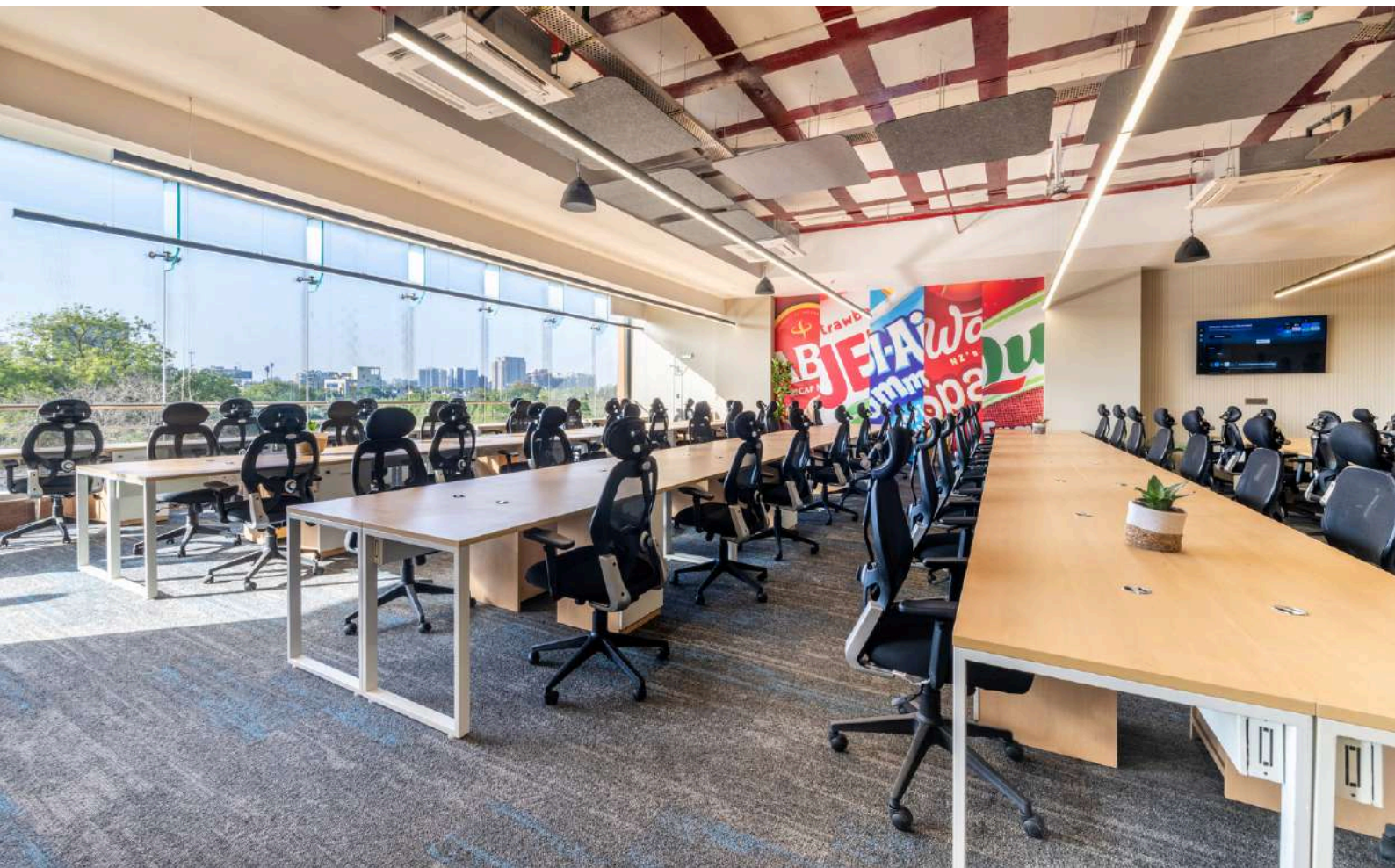
# Gujarat's GCC ecosystem.

Gujarat's IT/ITES and GCC policies are cultivating a strong ecosystem for Global Capability Centres - encouraging digital infrastructure, innovation, operational flexibility and ease of doing business. The GCC Policy specifically supports multinationals and high-value global operations across **AI, analytics, engineering, finance and R&D**. With a competitive cost base, a deep, skilled talent pool and rapidly developing urban infrastructure, Gujarat is steadily emerging as a preferred GCC destination in India.

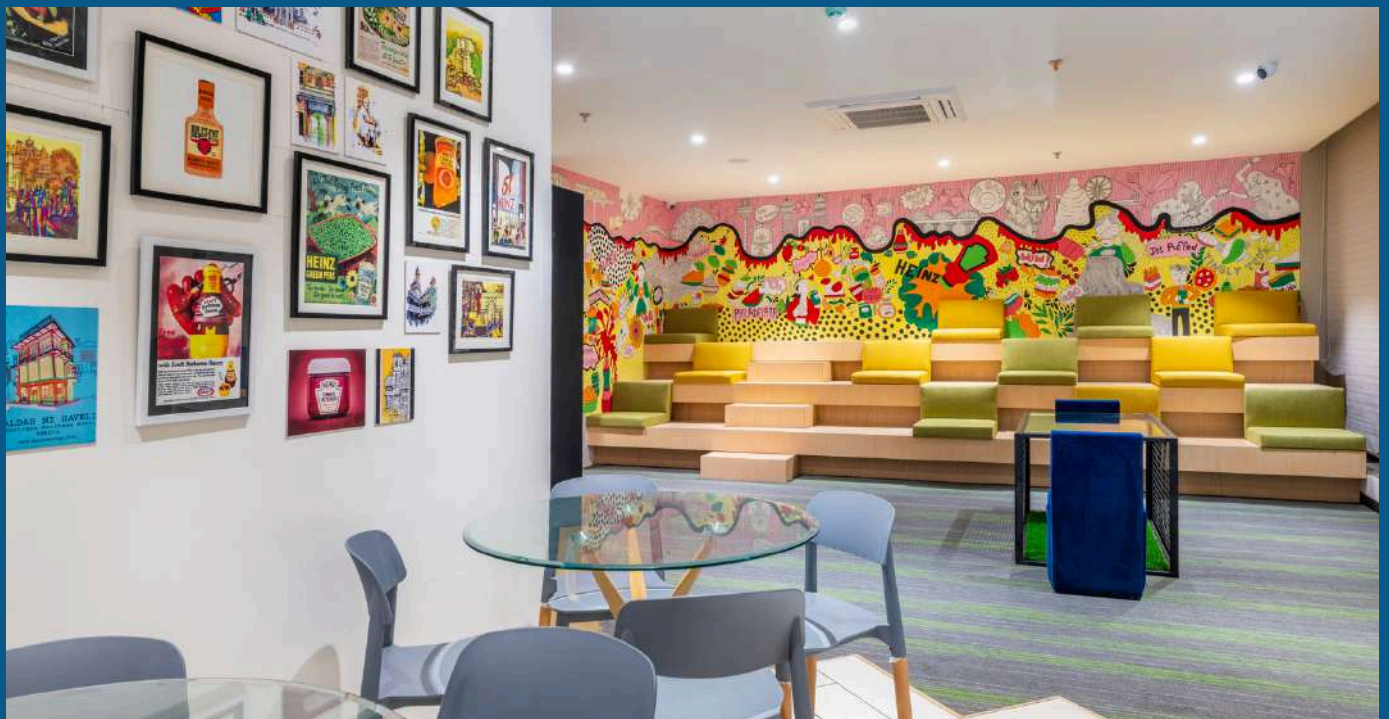
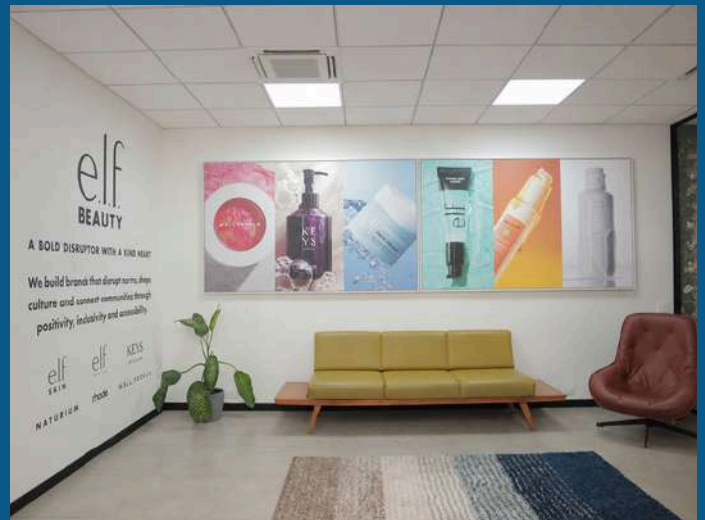
Managed and coworking spaces accelerate this growth by offering agile, plug-and-play workspace tuned to evolving needs - flexibility, scalability, faster setup and reduced upfront capital. By combining modern infrastructure with enterprise-ready facilities, operators like Paragraph help GCCs scale seamlessly while lifting productivity and operational efficiency.

**IT / ITES  
Policy  
2022-27**  
Govt. of Gujarat

Paragraph is **empowered with the Government of Gujarat** under the IT/ITES Policy 2022-27. Eligible units can avail a **50%** refund on per-seat rental for the first **two years**, and **25%** for the next **three years** - a material, policy-backed reduction in your cost of occupancy.



# Workspaces clients are proud to call their own.







**paragraph**<sup>®</sup>  
SPACE TO GROW



+91 98251 10514



[www.paragraph.business](http://www.paragraph.business)



[corporate@paragraph.business](mailto:corporate@paragraph.business)



### Head Office Address

1501, 15th Floor, Mondeal Heights, Near Novotel Hotel,  
S.G. Highway, Ahmedabad, Gujarat, India 380015.



Instagram:  
[@Paragraph.Business](https://www.instagram.com/Paragraph.Business)



LinkedIn:  
[@Paragraph](https://www.linkedin.com/company/Paragraph)